

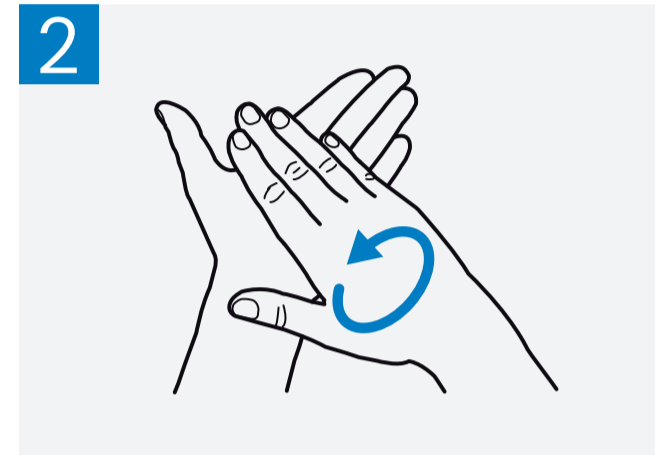
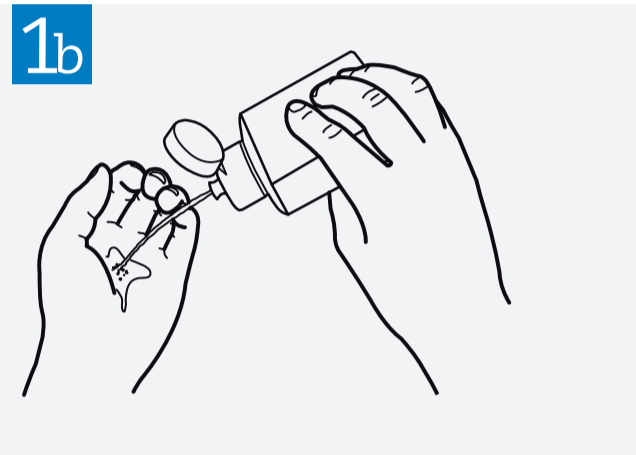
# How to Handrub?

Rub hands for hand hygiene! Wash hands when visibly soiled.

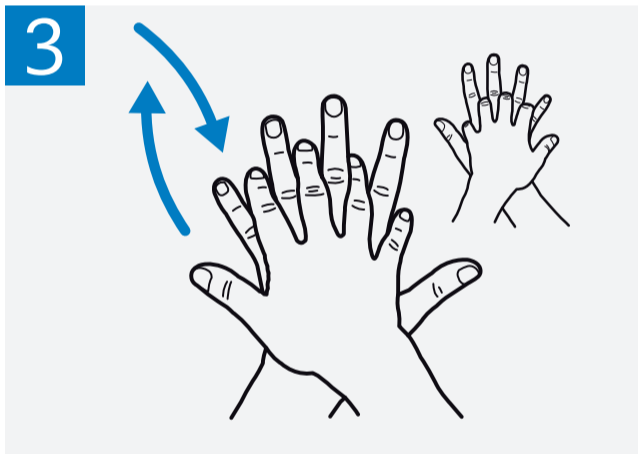
 Duration of the entire procedure: 20-30 seconds



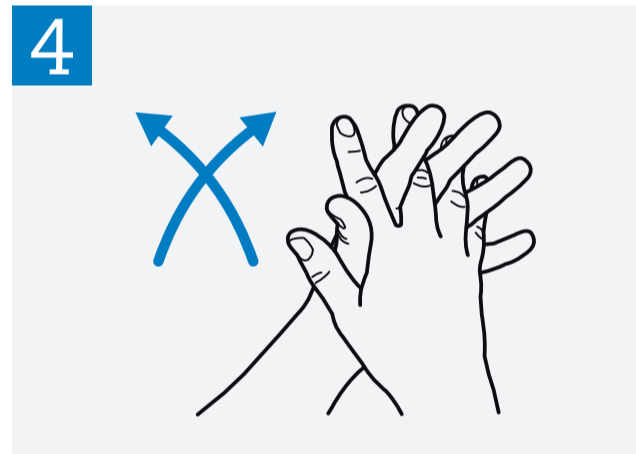
Apply a palmful of the product in a cupped hand, covering all surfaces;



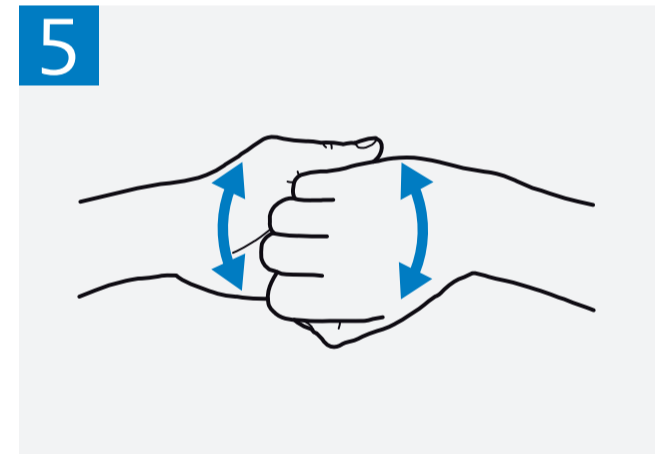
Rub hands palm to palm;



Right palm over left dorsum with interlaced fingers and vice versa;



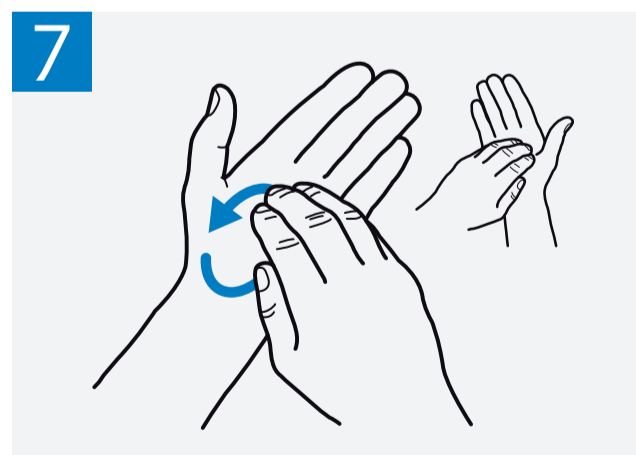
Palm to palm with fingers interlaced;



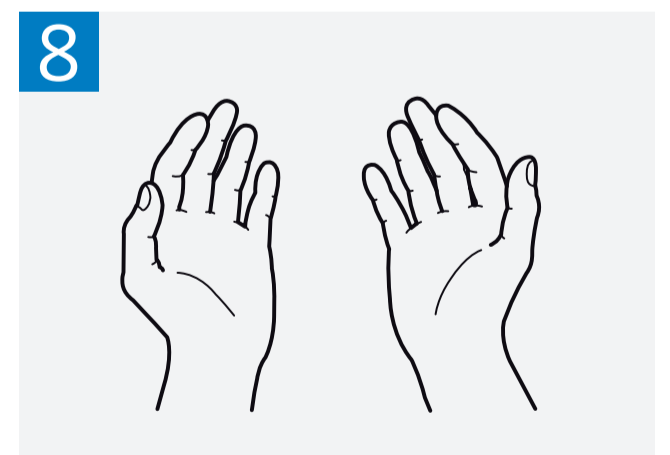
Backs of fingers to opposing palms with fingers interlocked;



Rotational rubbing of left thumb clasped in right palm and vice versa;



Rotational rubbing, backwards and forwards with clasped fingers of right hand in left palm and vice versa;



Once dry, your hands are safe.